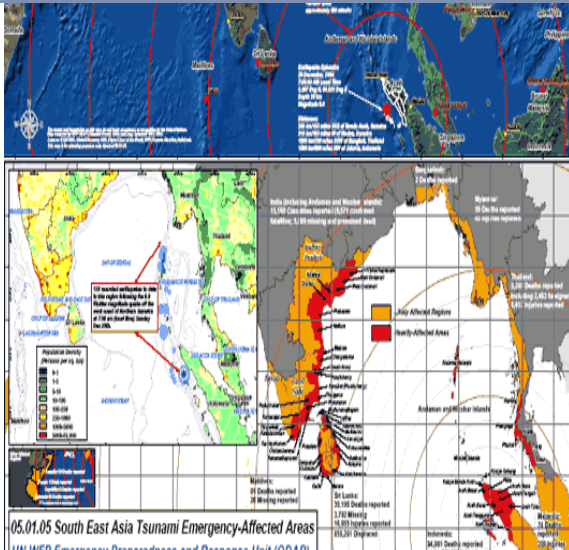


# Training and Capacity building in Healthcare GIS Data Utilization

**March 26- 30, 2012**



**Venue**  
International Institute of Health Management Research,  
New Delhi



## Rationale

This workshop helps in identifying the current and future course of action by using GIS in health care and planning which always remain contemporary as the amount of data generated each day and continuous flow of information from all corners of the world are required to be juxtaposed with problems and prospects of health care reach. Its applicability can be understood as GIS integrate many public services (Communication, municipal boards, urban and rural govt. network, health facilities etc.) in one chain and can be contacted/ coordinated in the order of urgency. So the tool not only helps in systematize the health care needs in normal regular days but also helps at the time of emergencies. Health management is handicap or only half exercise until information used spatially.

## Objective

To expose/train people in the health care and allied industries from various fields by not only building their capacity and empowering them with tool which will enable them in decision making in handling health care necessities for the needy populace. The work shop will also help professionals on the need, availability of data and the subsequent utilization of such information by mapping, strategically planning health concerns geographically.

## Course Outline/ Contents

- Day 1.** GIS and health care: Issues in Focus  
GIS data acquisition and Storage
- Day 2.** GIS data Transformation: mapping health data (introduction to the Software and practical application)  
Examples from the-
- GIS applications in Communicable disease prevention and Control
  - GIS applications in chronic disease prevention
  - GIS and Environmental Exposure and disease risk
  - Health care and Injuries: Use of GIS
  - Health care and Community: health issues and resource planning
- Day 3.** Practical session (two) Using Quantum GIS
- Day 4.** Practical Session  
Special Guest Lecture on Spatial Statistical Analysis
- Day 5.** Presentation and assessment of the groups.

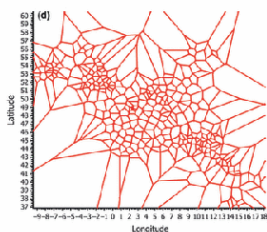
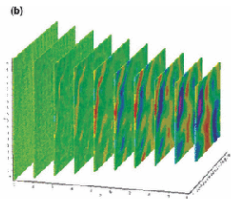
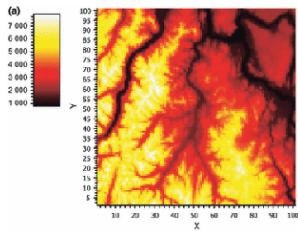
## ABOUT THE ORGANIZERS

**IIHMR, Delhi** is an institution dedicated to the improvement in standards of health through better management of health care and related programmes. It seeks to accomplish this through management research, training, consultation and institutional networking in a national and global perspective.

In addition to research, training and consultancy the institute is offering a two years full time postgraduate programme with specialization in Hospital, Health Management and Healthcare IT. This course has been approved by AICTE.

## TARGET AUDIENCE

Doctors, Para- medic staff, disaster managers, govt. officials in health planning and management, personnel in prevention surveillance organisation, Professionals from NGO's working in this field.



## Benefits

It helps organisation in giving one of the most advanced and user friendly tools which is very much in demand because of application aspects. It is easy to understand, utilize as it will not be requiring any capital investment before you learn to comprehend the tool by combining plethora of health statistics.

## Tools & Techniques

Availability of Data on health and disease. Source of data and MAP GIS software Quantum GIS and Picture Review lectures on ARC-GIS.

## RESOURCE TEAM

- **Pragya T. Gupta, Assistant Professor, IIHMR New Delhi** has quality exposure in health research and has used GIS for not only mapping the 'health services' but have also used it for the planning of project implementation.
- **Dr Nitish Dogra, Assistant Professor, IIHMR New Delhi** is a physician with MBBS and MD degrees from the University of Delhi. In addition he has also completed an MPH degree from the Johns Hopkins University, Baltimore, United States where he took up clinical epidemiology as one of the courses. Subsequently he worked with the International Clinical Epidemiology Network (INCLIN) as a program consultant. He has also served as visiting/guest faculty with ICRI and Empower in Delhi. Dr. Dogra has been associated with the World Health Organization (WHO) as a temporary adviser, consultant and project principal investigator in the past. He has been awarded a Gates Foundation scholarship for participation in an international conference in the US in relation to his research work. He also serves on the institutional ethics committee of IIHMR, New Delhi as it's member secretary.

### PARTICIPATION FEE:

INR 12, 500 (Non- residential) for Indian  
USD 400 (Non- residential) for  
International participants

The programme fee will cover:

- Tuition Fee
- Course Study materials
- Local hospitality at IIHMR, New Delhi  
( Lunch and Tea)

**Last Date of Registration is 19<sup>th</sup> March  
2012**

### ACCOMMODATION:

The accommodation is available on  
request and charges are as follows:

- Accommodation on Twin sharing  
INR 1500 per day per person  
( including breakfast)
- Accommodation on Single occupancy  
INR 2000 per day per person  
(including breakfast)

**For registration and queries, please contact:**

Ms. Shikha Bassi, Training officer  
e-mail: [ppdp\\_delhi@iihmr.org](mailto:ppdp_delhi@iihmr.org), [shikha@iihmr.org](mailto:shikha@iihmr.org)

**International Institute of Health Management Research**

Sector 18 A, Phase-II, Dwarka, New Delhi –110 075, [www.iihmrdelhi.org](http://www.iihmrdelhi.org)